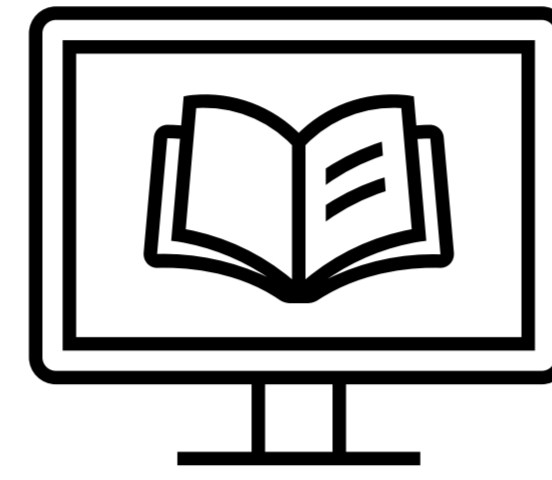


# Library services for students in the field of political science

An overview by Pia Böhme from January 2024



## Where to start?

- Create a SWITCH edu-ID at: [uzb.swisscovery.slsp.ch](http://uzb.swisscovery.slsp.ch)
- With your SWITCH edu-ID on your UZH Card, you now have yourself a library card for checking out books, reserving items, inter-library loans and much more.
- Make sure to have set up the [UZH VPN client](#) to have convenient access to all library resources available anywhere and anytime on your private devices (applies to Google Scholar as well)

Swisscovery



## UB Political Science

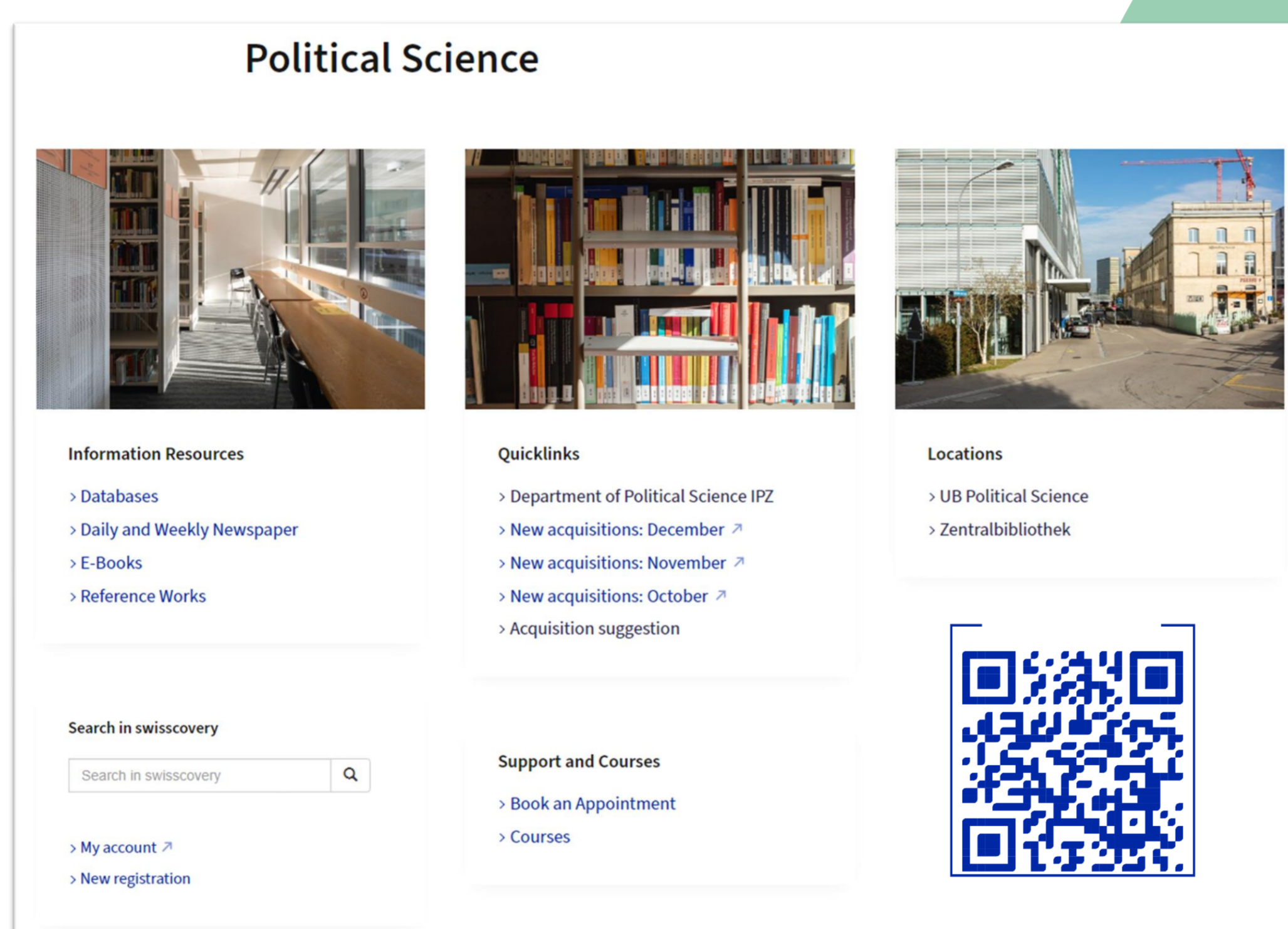
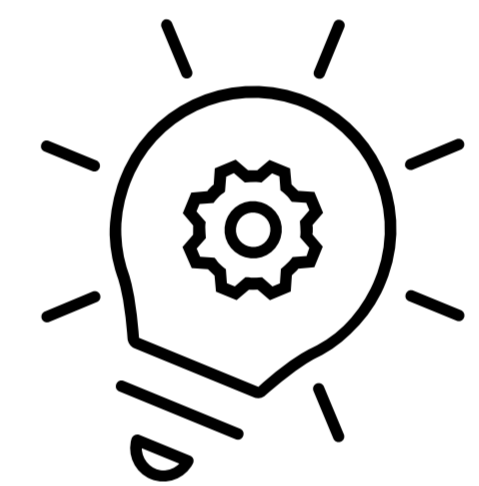
Location: Affolternstrasse 56 **F-130** in 8050 Zurich  
Access with UZH Card during building opening hours: Mon-Fri 7:00am -7:00pm  
No staffed information desk at this location but self-checkout

## Zentralbibliothek

Location: Zähringerplatz 6 in 8001 Zurich  
Building opening hours: Mon-Fri 8:00am-8:00pm, Sat 9:00am-5:00pm, Sun (reading room only) 9:00am-5:00pm  
Use your UZH Card with SWITCH edu-ID as library card here too

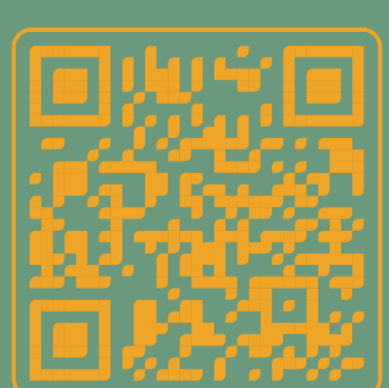
## Conducting research? But how ?

- On the [Subject-Specific Support Page](#) you may find a bundled overview of relevant resources from databases and newspapers to e-media and common reference works.
- The library team also offers a programme of courses and events designed to make your studies easier. Take a look at the biweekly [Coffee Lectures schedule](#) for example, where tutorials in English are offered on a regular basis too.
- Furthermore, you could book a personal consultation. Pia Böhme ([pia.boehme@ub.uzh.ch](mailto:pia.boehme@ub.uzh.ch)) is your liaison librarian for political science and will be happy to answer any questions regarding academic work, finding appropriate topics and literature, correct citation, data management, etc.



## Help & support

- As a user of the University Library, you have access to the resources of all UB locations as well as those of the Zentralbibliothek. Here, Gertruda Kaczmarek ([gertruda.kaczmarek@zb.uzh.ch](mailto:gertruda.kaczmarek@zb.uzh.ch)) takes care of all matters relating to political science.
- Personal or Study Related Problems? [Psychological counseling](#) can help you overcome difficult phases in life or troubles in your studies. The counseling services are available to all students and PhD candidates at UZH. The sessions are confidential and free of charge. The counsellors speak German, English, French, Polish and Swedish.
- [Disability Office](#) is UZH's Center of Expertise in terms of Inclusion, Accessibility, Academic Accommodations and Equal Rights for people with disabilities or chronic illnesses.



she/her



Stay up to date!



**Polito Fachverein**  
Universität Zürich

Social Media: Twitter @uzh\_ub

Instagram @uzh.ub / @zentralbibliothek\_zuerich

